

Classified by _____ in accordance of
 OPNAVINST 5032.13 (SECURITY)
 on _____
 (Date) (Signature) (Rank)
 NAVAL SEA SYSTEMS COMMAND
 Department of the Navy

U. S. S. MARBLEHEAD (CL12)

BOMB DAMAGE

4 FEBRUARY 1942

JAVA SEA

The Commander-in-Chief, United States Fleet and Chief of Naval Operations directs that this report be shown only to those persons to whom the report would be of value in the performance of their duties.

Steps shall be taken accordingly to insure that the report will be seen by those persons responsible for design, construction and repair of naval vessels, as well as for their operation, but by no others.

FILE COPY
 RETURN TO COOL 63

15, November 1943

Bureau of Ships
 Navy Department

710205-1048
 WAR DAMAGE REPORT No. 34

OFFICIAL PHOTOGRAPH
RELEASED FOR PUBLICATION



Photo 1: View of damage to main deck at fantail.

OFFICIAL PHOTOGRAPH
RELEASED FOR PUBLICATION

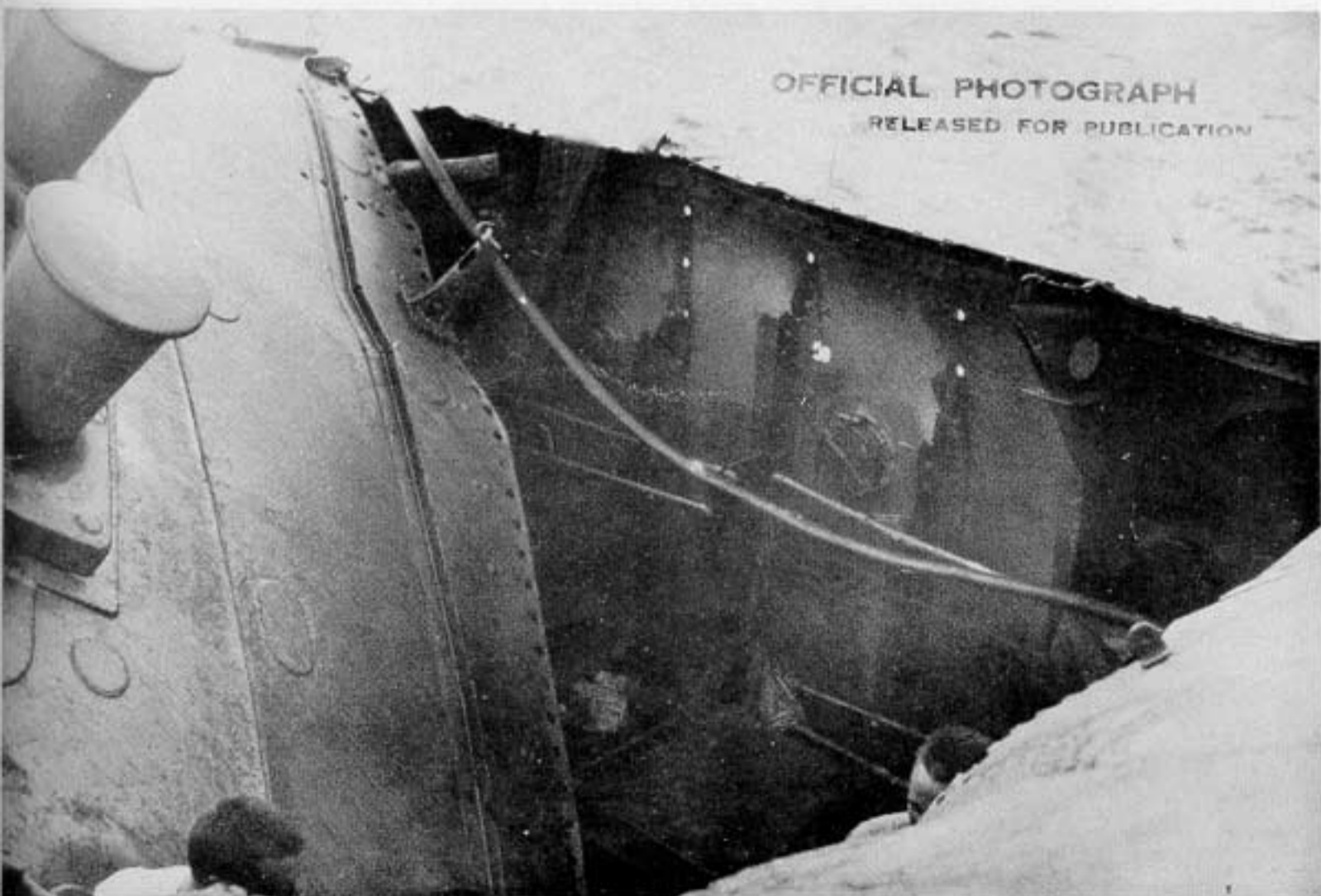


Photo 2: Port side looking aft into C.P.O. quarters.

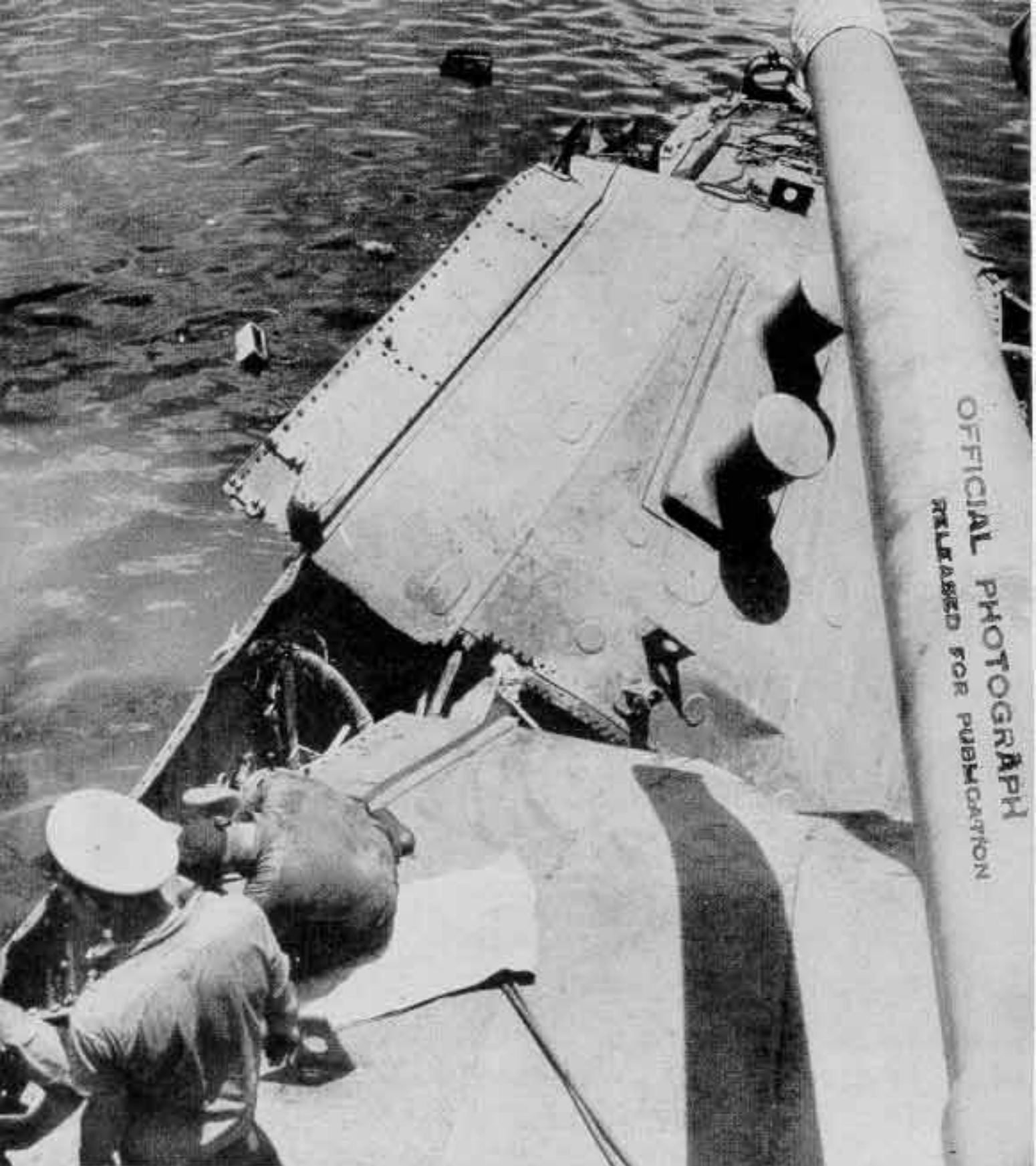


Photo 3: Starboard side of fantail looking aft.



Photo 4: C.P.O. quarters D-304 port side.

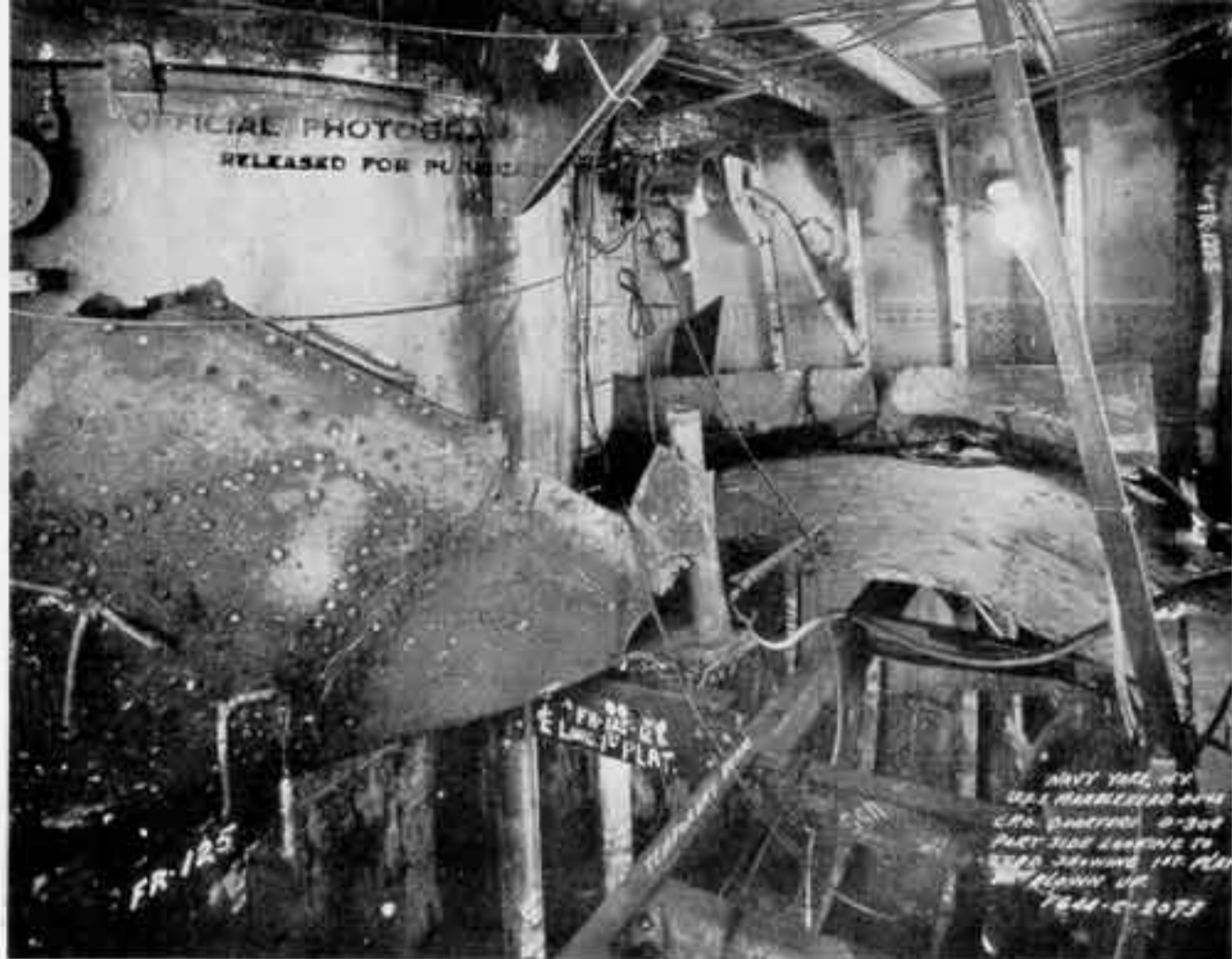


Photo 5: C.P.O. quarters D-304 port side looking to starboard showing first platform deck blown up.



Photo 6: C.P.O. quarters D-304 port side looking forward.

OFFICIAL PHOTOGRAPH
TO BE RELEASED FOR PUBLICATION



Photo 7: Hole in first platform deck frames 125 to 127 portside.

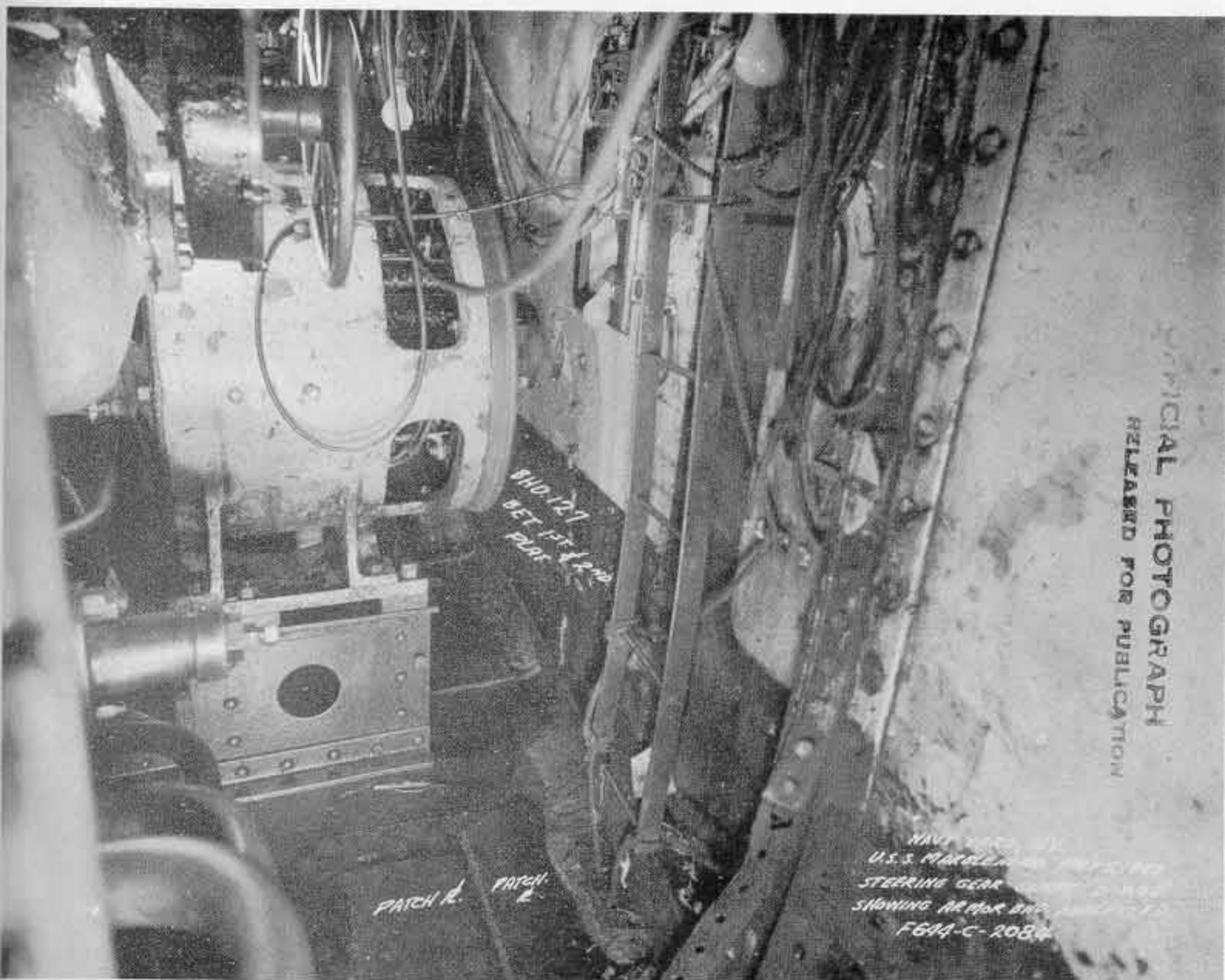


Photo 8: Steering gear compartment D-205 showing temporary repairs to armored bulkhead 127.

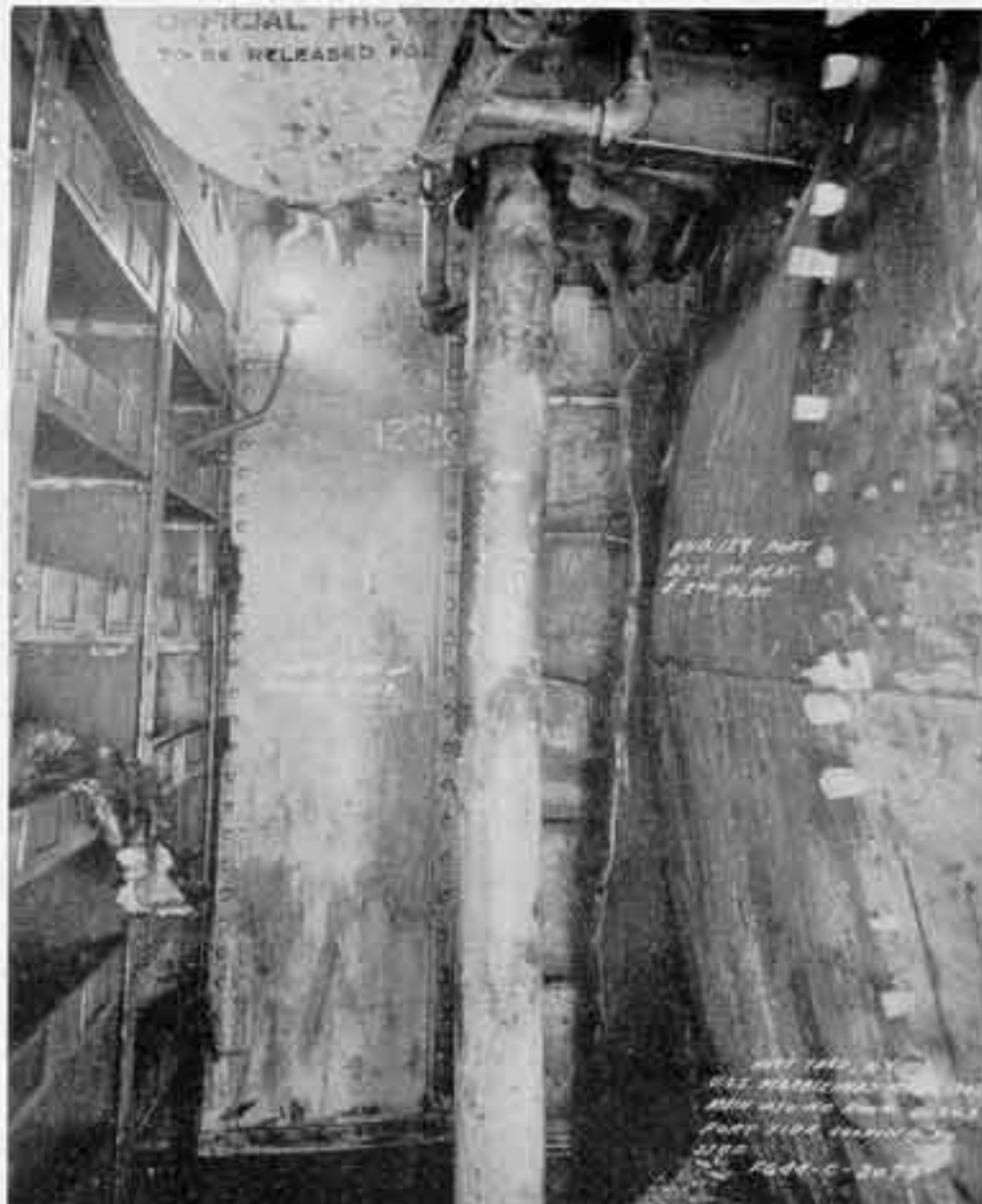


Photo 9: Compartment D-203, port side, looking to starboard.



Photo 10: Compartment D-203, starboard, looking to port.

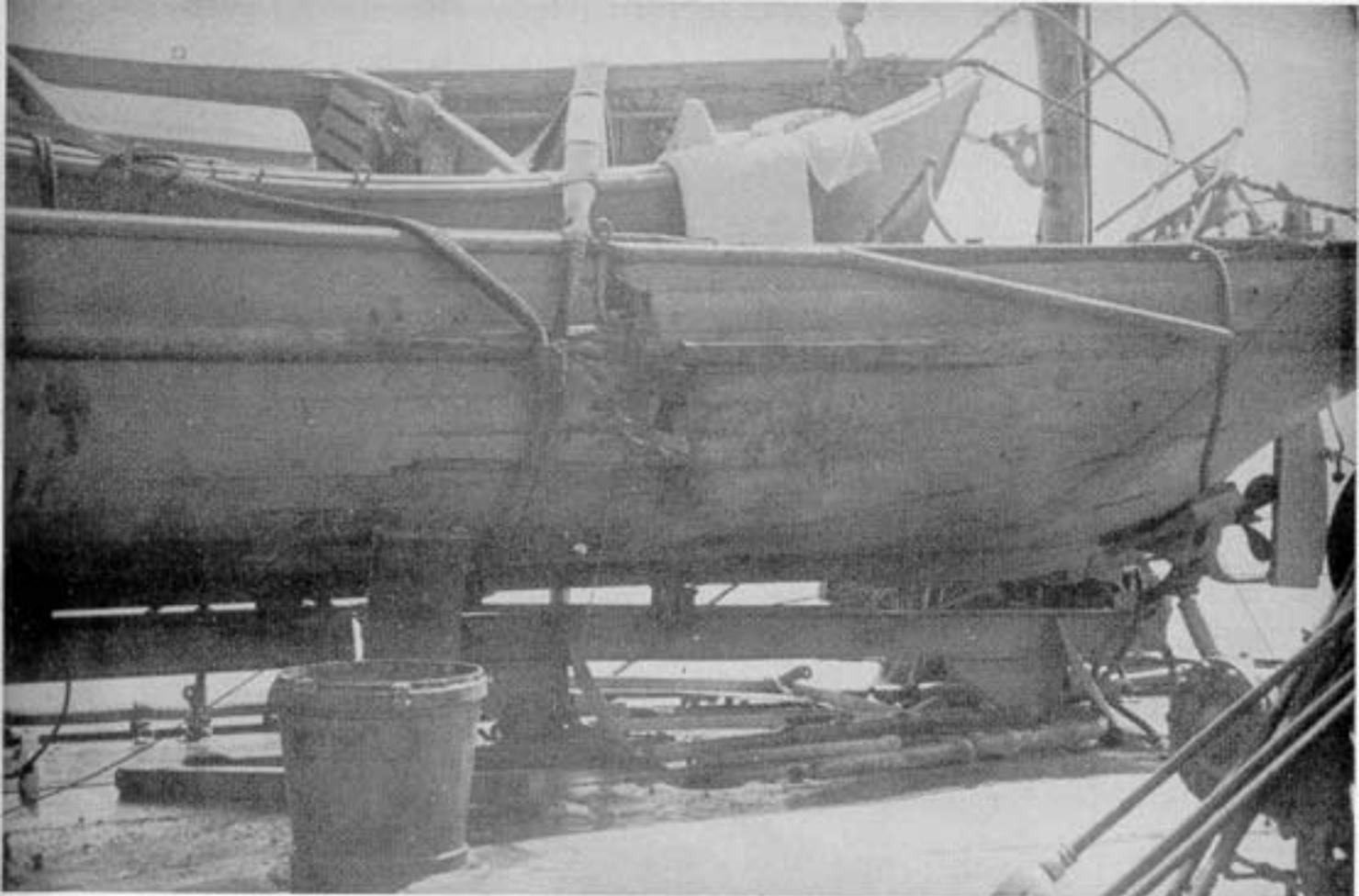


Photo 11: Motor launch amidships showing path of bomb.



Photo 12: Bomb hole upper deck under motor launch.

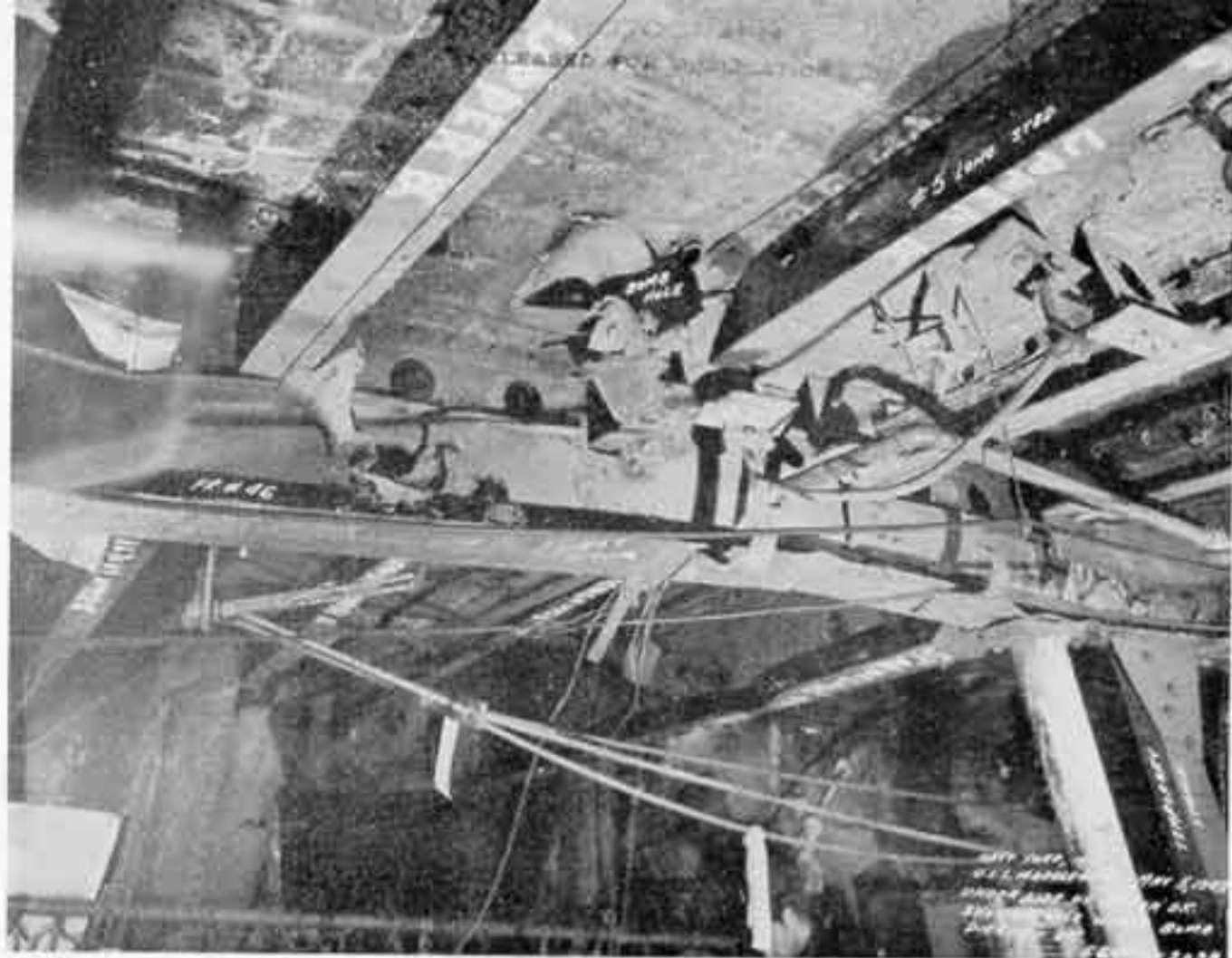


Photo 13: Under side of upper deck showing hole where bomb pierced deck.



Photo 14: Hole made by bomb in main deck, frame 47.



Photo 15: Sick bay first platform deck looking outboard.

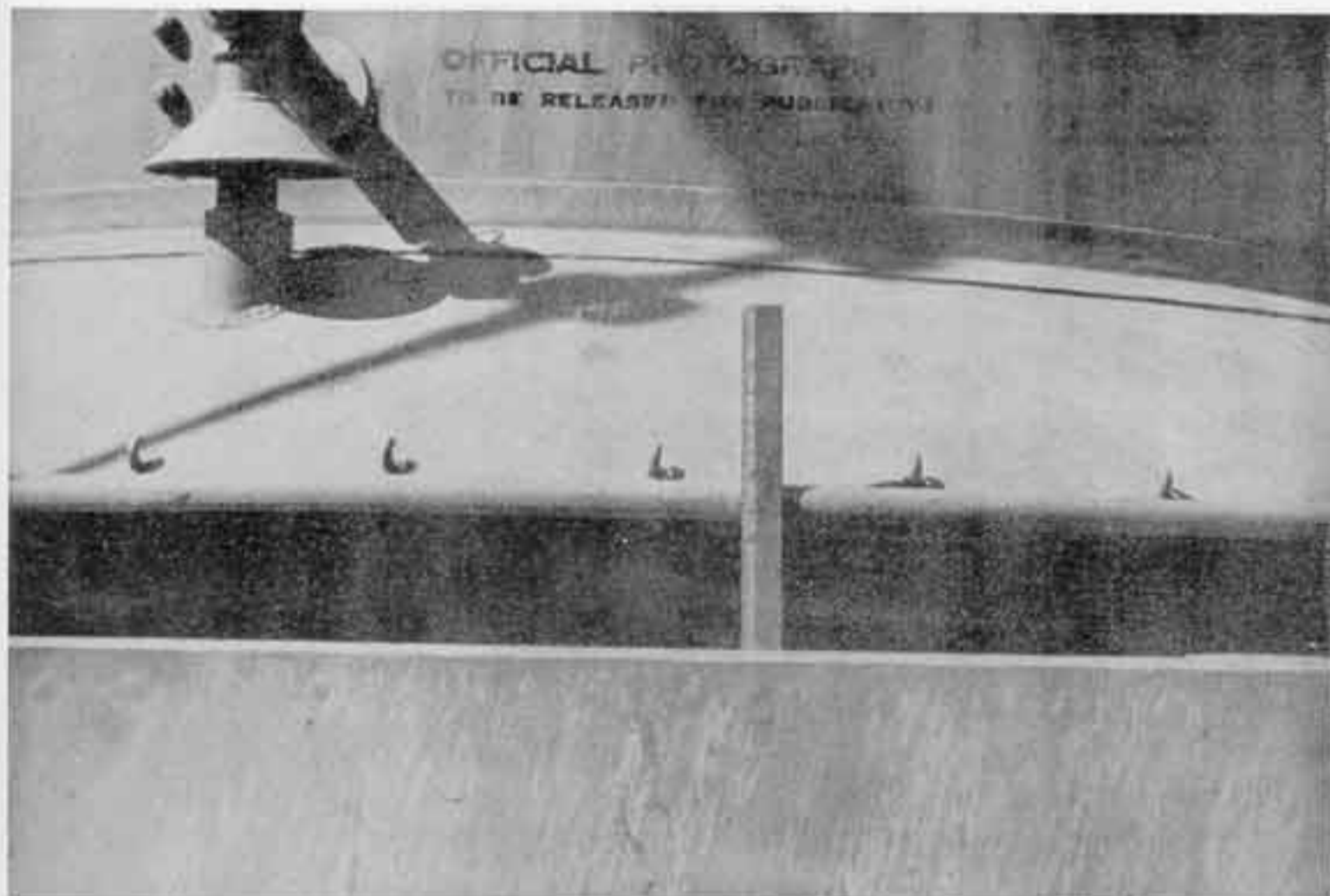


Photo 16: Flare of shield of No. 1 stack, showing deflection. Normal space between shield and deck is 12 inches.



Photo 17: Near miss showing bulge port side.



Photo 18: Six-inch powder magazine A-108-M, looking aft.



Photo 19: Magazine A-110-M looking aft.



Photo 20: .50 caliber magazine A-112-M looking forward.

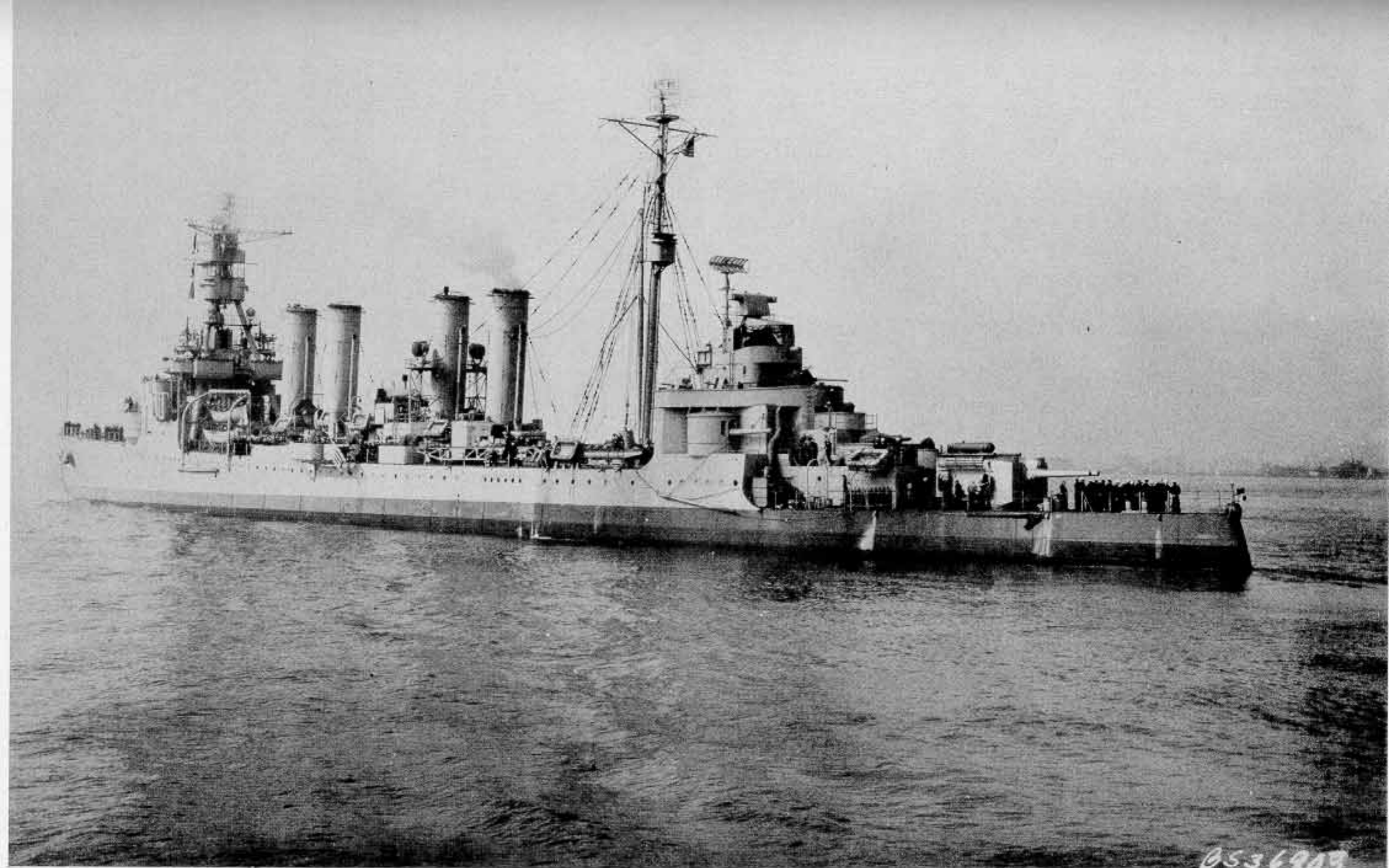
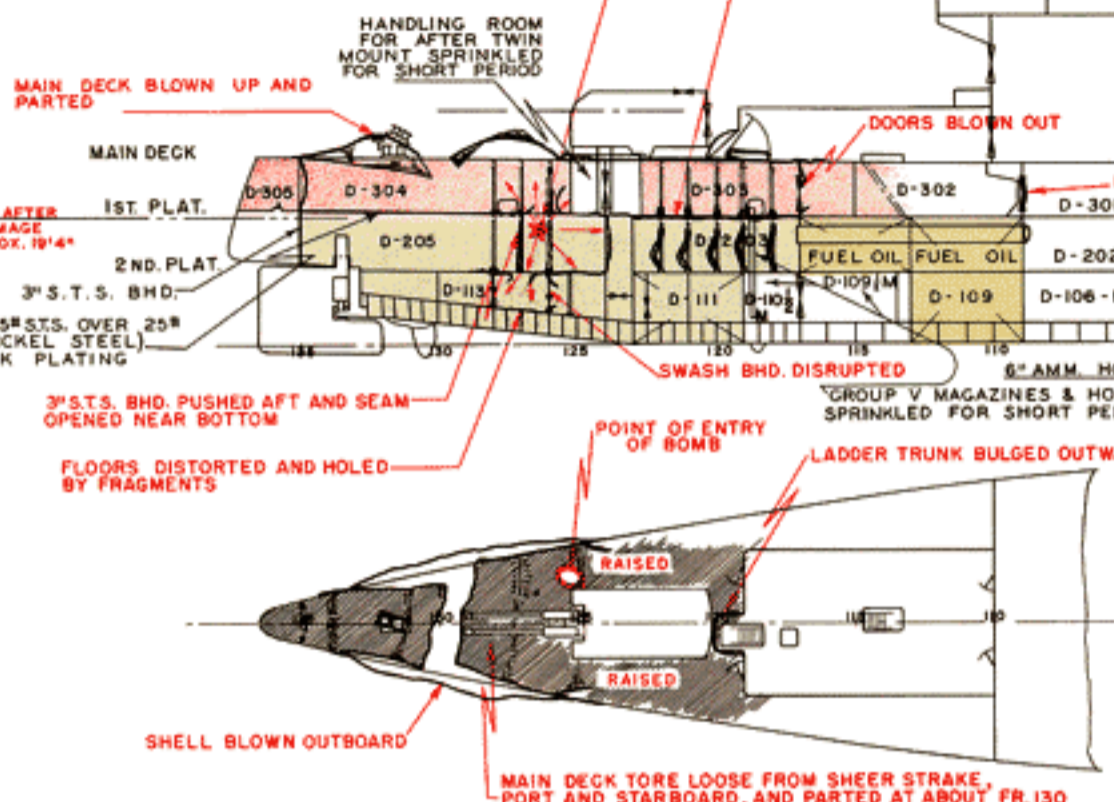
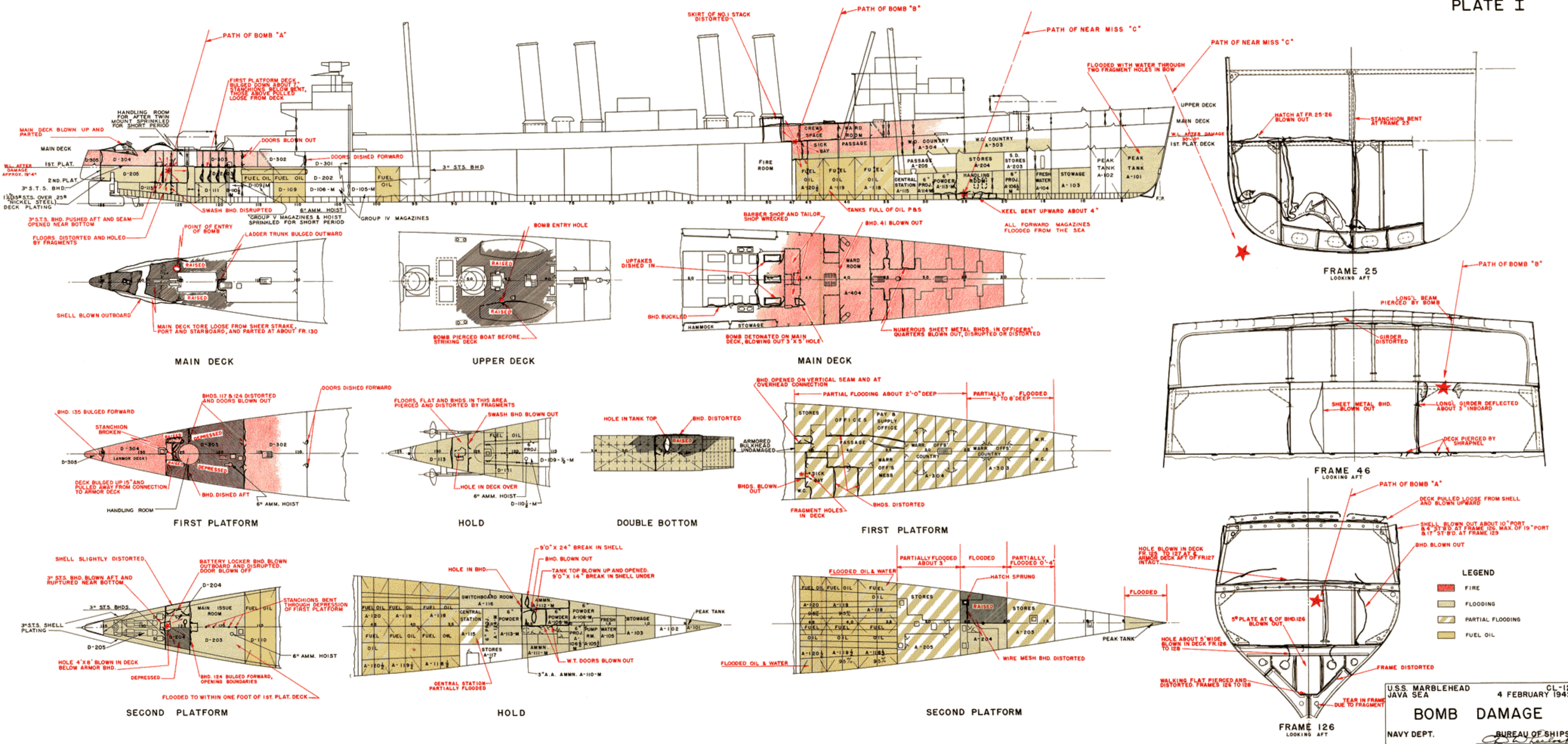


Photo 21: MARBLEHEAD after completion of permanent repairs and alterations.



U.S.S. MARBLEHEAD
 JAVA SEA
 NAVY DEPT.

CL-12
 4 FEBRUARY 1942
 BUREAU OF SHIPS

BOMB DAMAGE